






27 Chelmsford Road ASQUITH NSW

4  3  3 

This beautifully presented northerly facing Family Residence is situated in a quiet, Cul-de-sac, a short walk to shops, schools and transport.

The entrance Foyer flows to an immaculately presented Formal Lounge and Dining Room featuring an expansive raked ceiling- full of light with large windows and skylights.

The Large open plan Family room is the Central Hub and consists of Kitchen, Informal Dining area and Lounge, flowing to a large covered patio for outdoor entertaining.

Downstairs are 2 double bedrooms with ensuites, Master suite with walk in Robe, making for easy living on one level. Upstairs is a third Living Area, Ideal as a teenage retreat or home office, or multi generational living.

An extra-large Garage and workshop area offers ample storage along with separate attic space.

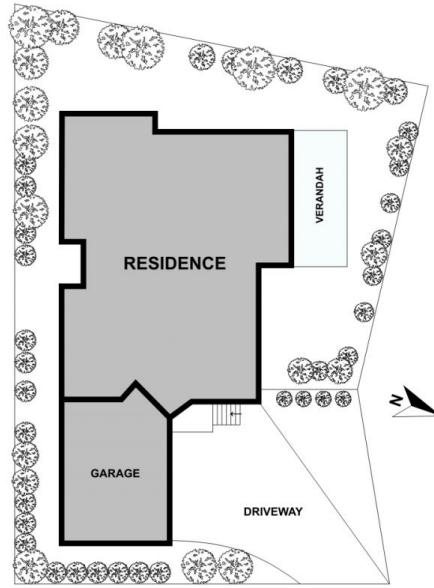
Type : House
Building Size : 31 sqm
Land Size : 701 sqm
View : <https://www.mcdonaghrealestate.com.au/sale/nsw/north-shore-upper/asquith/residential/house/7473752>



Peter McDonagh
 0410 587 856

[For full version visit the website](https://www.mcdonaghrealestate.com.au)

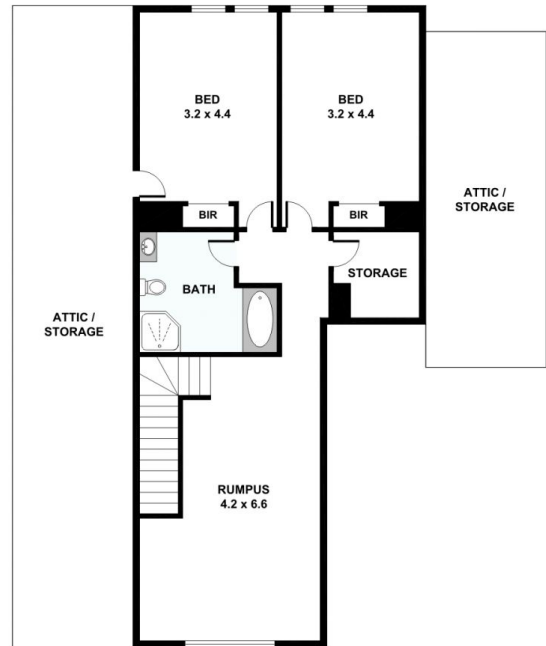
27 Chelmsford Road, Asquith



SITE PLAN



GROUND FLOOR



FIRST FLOOR

Please note: All stated dimensions are approximate only. Particulars given are for general information only and do not constitute any representation on the part of the vendor or agent.

