



**22 Wideview Road BEROWRA HEIGHTS NSW**

3 1 1

Impeccably maintained hidden residence, wrapped in privacy and poised on almost 700sqm to capture valley views across Muogamarra Nature Reserve - provides a peaceful home oasis catering perfectly to easy care family living, central to every convenience. This welcoming residence is ready to enjoy as it is, and offers plenty of scope to extend or enhance.

A choice of open plan lounge and dining areas spoils the entertainer for choice with a generous sense of space, and ambience geared for both formal and relaxed occasions. Energising morning light floods casual living, complete with cosy open log fireplace, sloping timber ceiling and seamless extension to the alfresco deck. Green outlooks are framed from every angle.

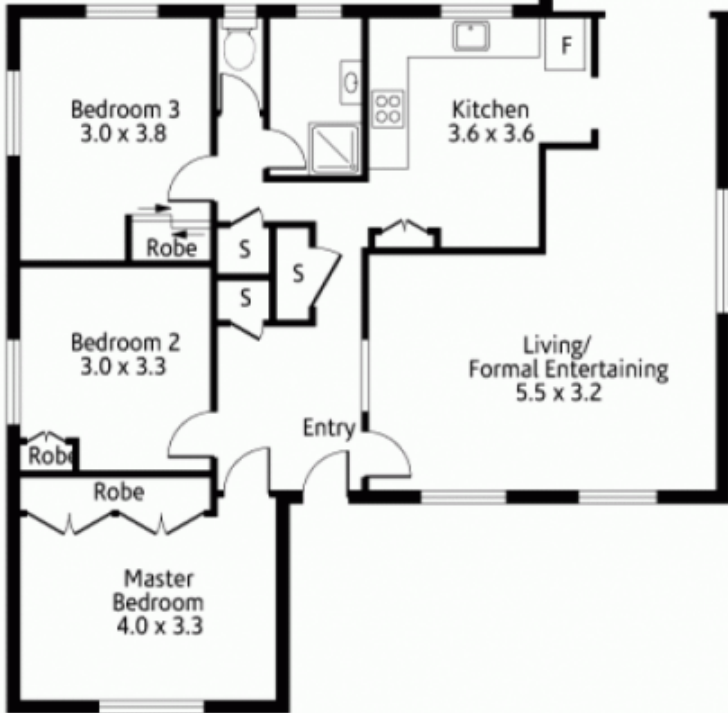
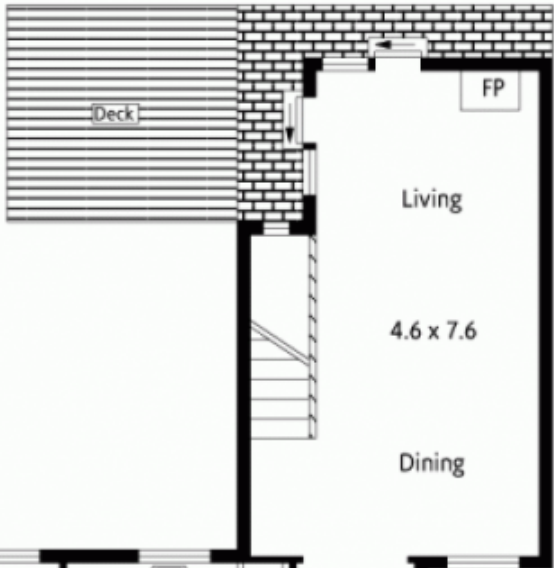
**Type** : House

**View** : <https://www.mcdonaghrealestate.com.au/sale/nsw/hawkesbury/berowra-heights/residential/house/7473674>



**Peter McDonagh**  
**0410 587 856**

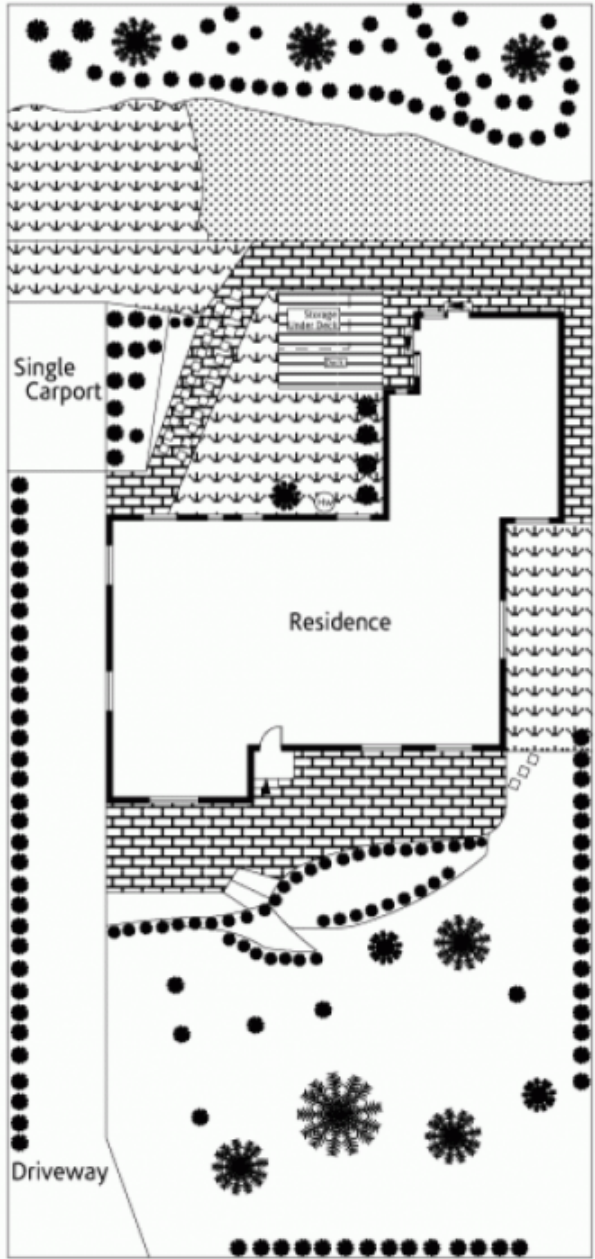
[For full version visit the website](https://www.mcdonaghrealestate.com.au)



Ground Level



Lower Level



Site Plan