






7 Galahad Close MOUNT COLAH NSW

5  3  2 

Grandly proportioned bi-level home of light, space and tranquility - poised on around 1064sqm in a private, elevated position showcasing spectacular Lyrebird Valley views. Accessed via a private driveway from a hushed cul de sac, the property supports a versatile family lifestyle with a long list of creature comforts, and self-contained accommodation.

Lush green outlooks frame the residence, and natural light floods the beautifully presented interior. A large, functional layout defines the upper level, embracing substantial lounge, dining and family areas graced with captivating natural outlooks through floor to ceiling glass.

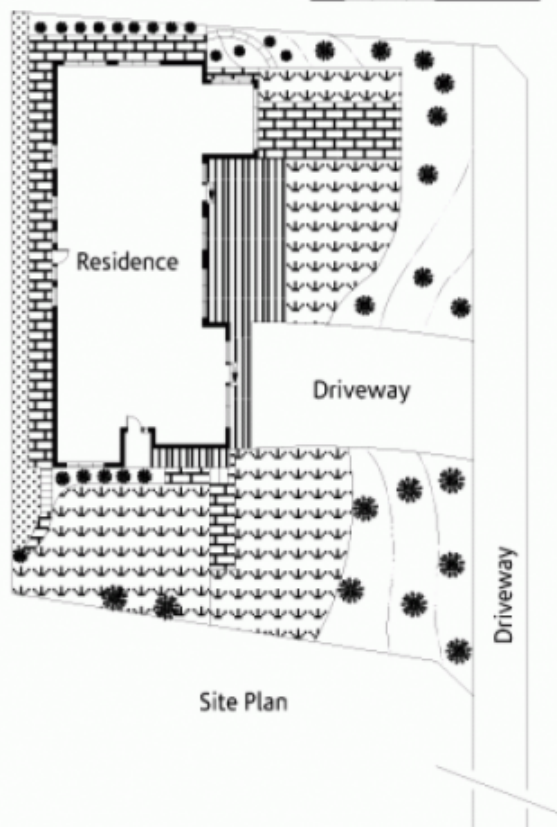
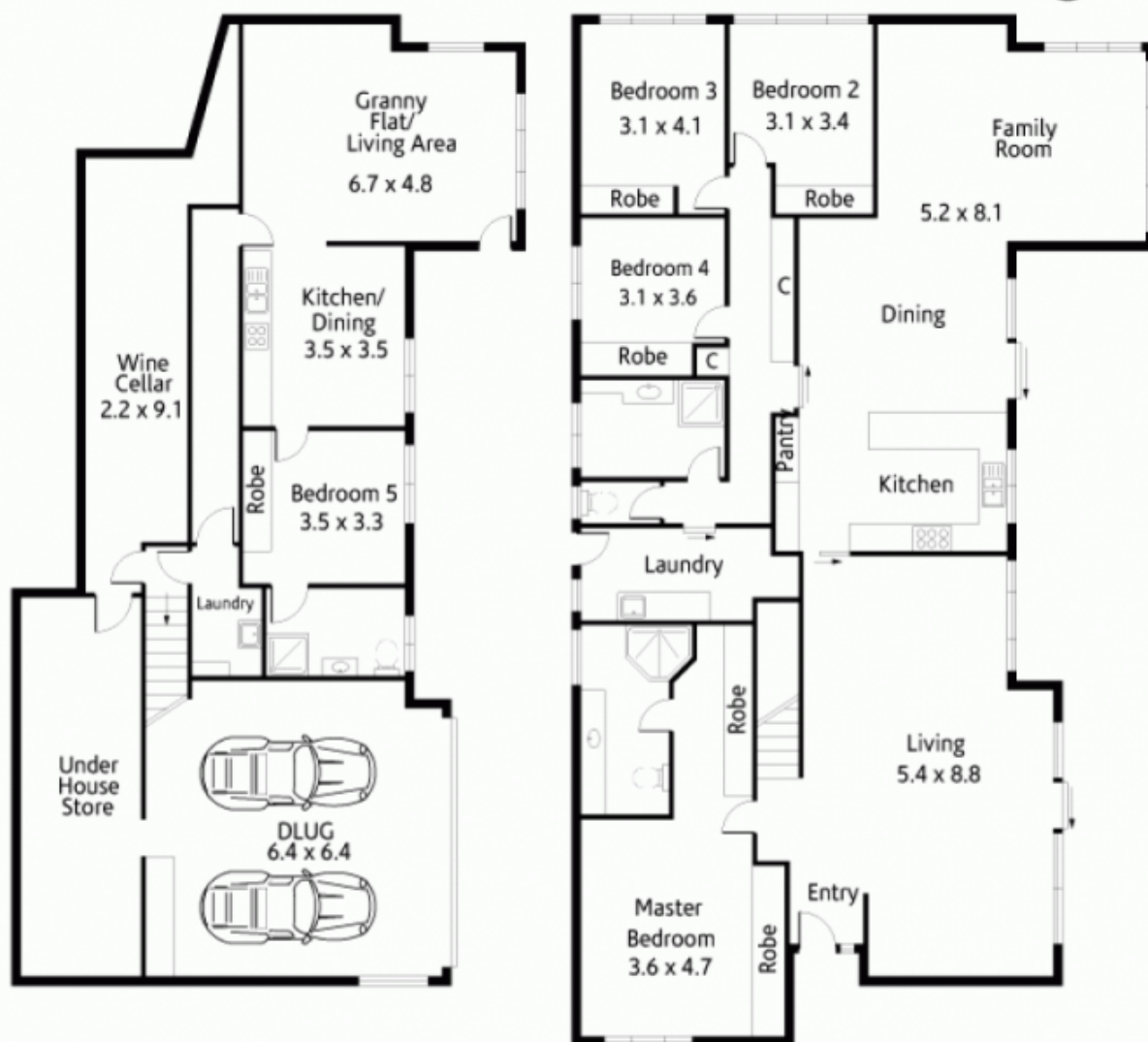
The attractive kitchen has been elegantly finished with

[For full version visit the website](https://www.mcdonaghrealestate.com.au)

Type : House
Land Size : 1064 sqm
View : <https://www.mcdonaghrealestate.com.au/sale/nsw/north-shore-upper/mount-colah/residential/house/7473667>



Peter McDonagh
 0410 587 856



Site Plan