

19 Kita Road BEROWRA HEIGHTS NSW

4 2 2

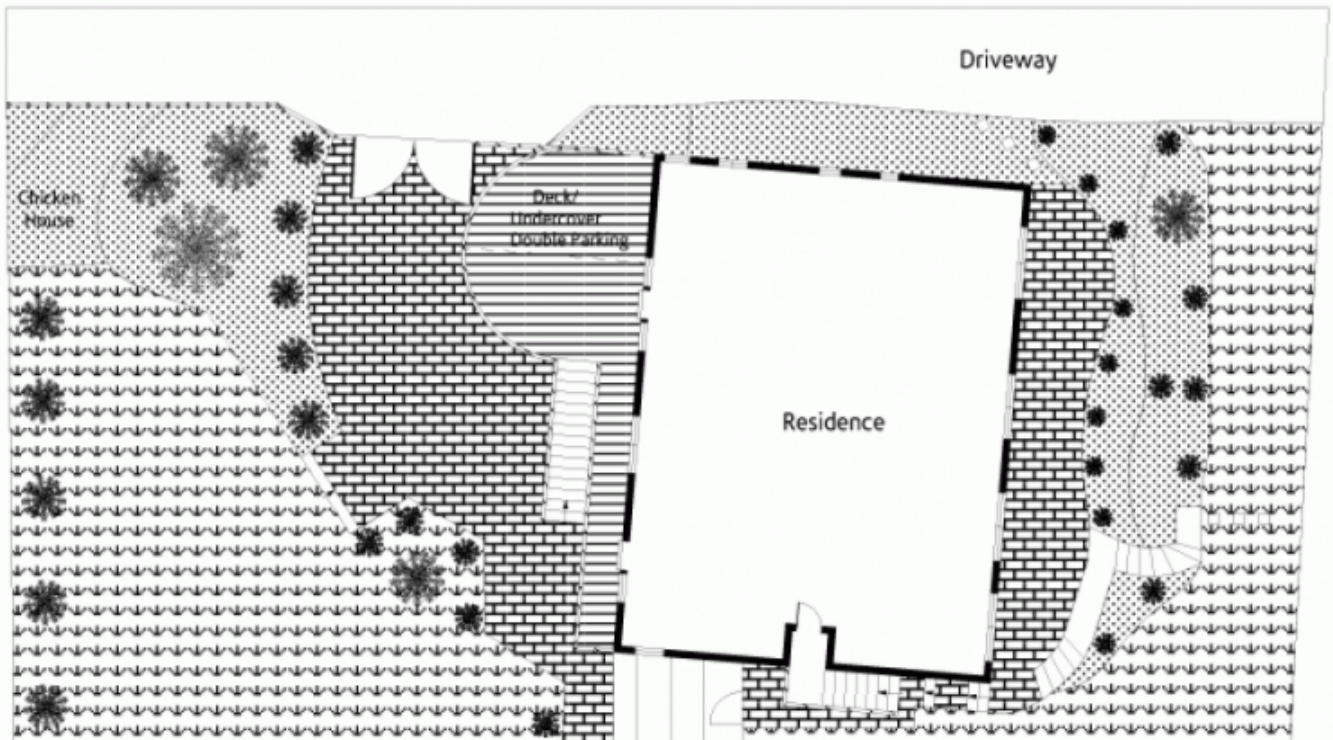
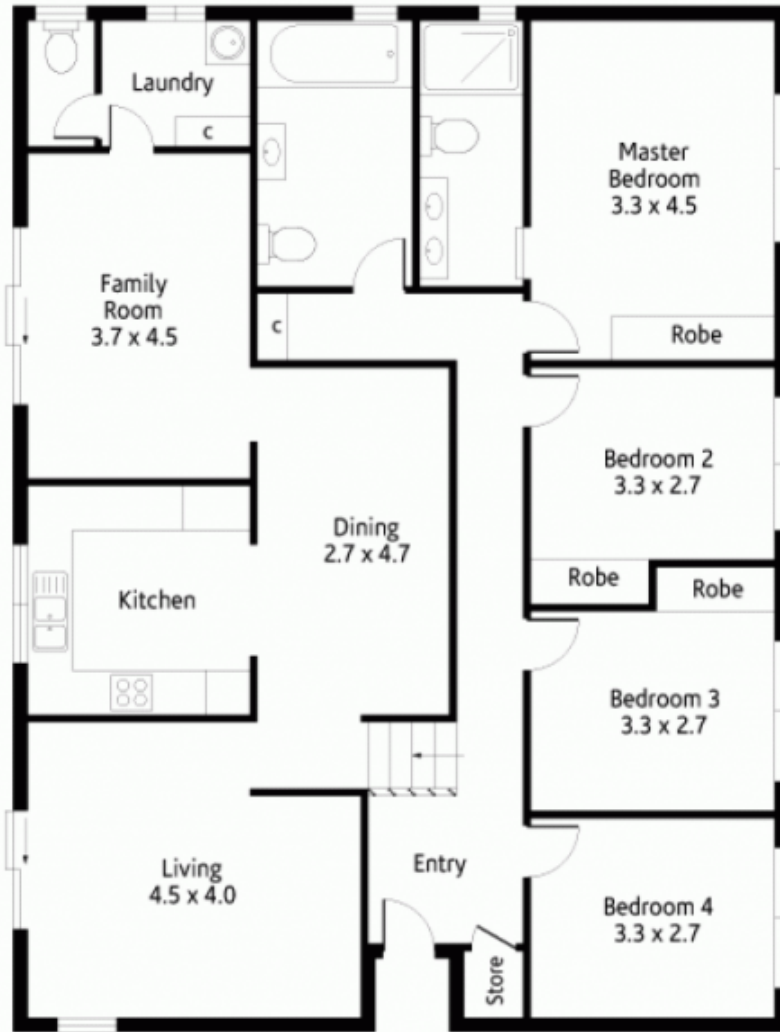
Privately poised in a breezy, elevated position showcasing stunning Berowra Valley horizon views, this stylishly renovated family home on almost 730sqm enjoys a surprisingly peaceful cul de sac setting - given its excellent proximity to local village amenities.

Type : House

View : <https://www.mcdonaghrealestate.com.au/sale/nsw/hawkesbury/berowra-heights/residential/house/7473637>

High set windows, soaring vaulted ceilings and crisp white walls culminate in a vibrant and airy interior ambience. Separate living, dining and family areas, awash with natural light, feature floating timber floors and are perfectly positioned to capitalise on the spectacular natural outlook. The large vibrant kitchen, wrapped with cupboard and bench space, has been geared as a functional delight for the home chef.

[For full version visit the website](#)



Site Plan