



11 Hume Place MOUNT COLAH NSW

4  2  1 

A distinctly warm, welcoming ambience with an emphasis on space shapes this character-filled two storey residence as a family home with heart. The totally private setting nestles on approx 983sqm beside a beautifully landscaped no through street, bringing you face to face with untouched bushland.

Lofty cathedral ceilings with exposed beams, freshly polished timber flooring and raw brick walls define the interior. Generous open plan living features a built-in combustion wood fireplace for snug winters. Broad tinted glass sliders flow to a vast open-air terrace fit for largest scale entertaining and a year round indoor outdoor lifestyle. Glass balustrading maximises the spectacular bush backdrop view, and makes you feel privately suspended

Type : House

View : <https://www.mcdonaghrealestate.com.au/sale/nsw/north-shore-upper/mount-colah/residential/house/7473597>

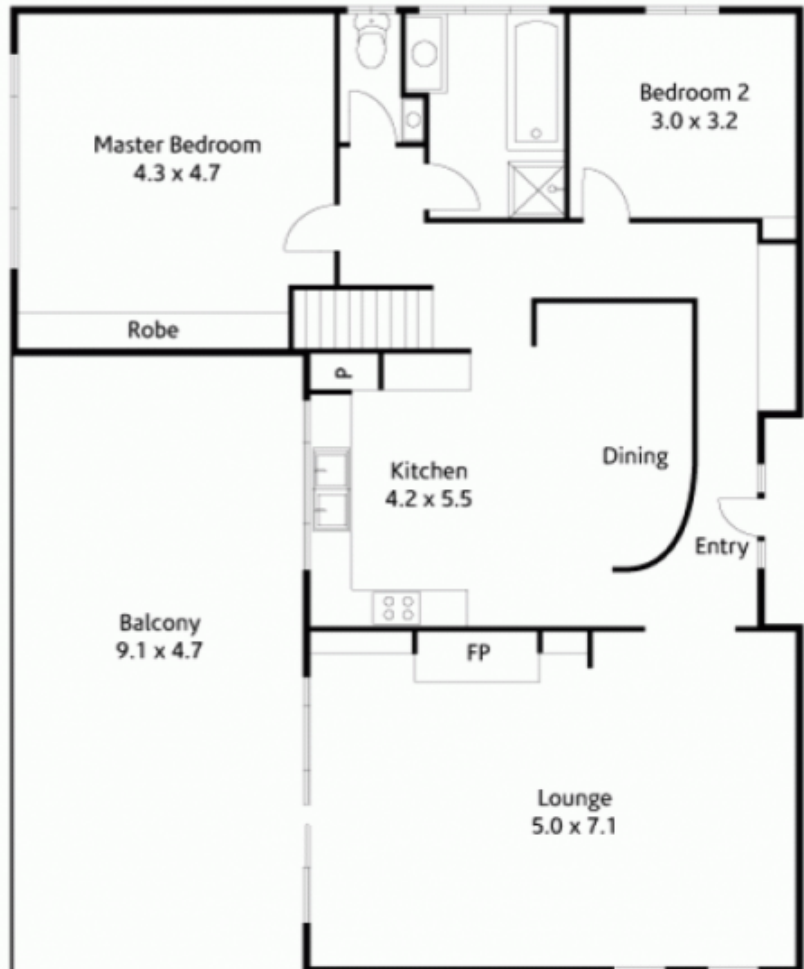


Peter McDonagh
0410 587 856

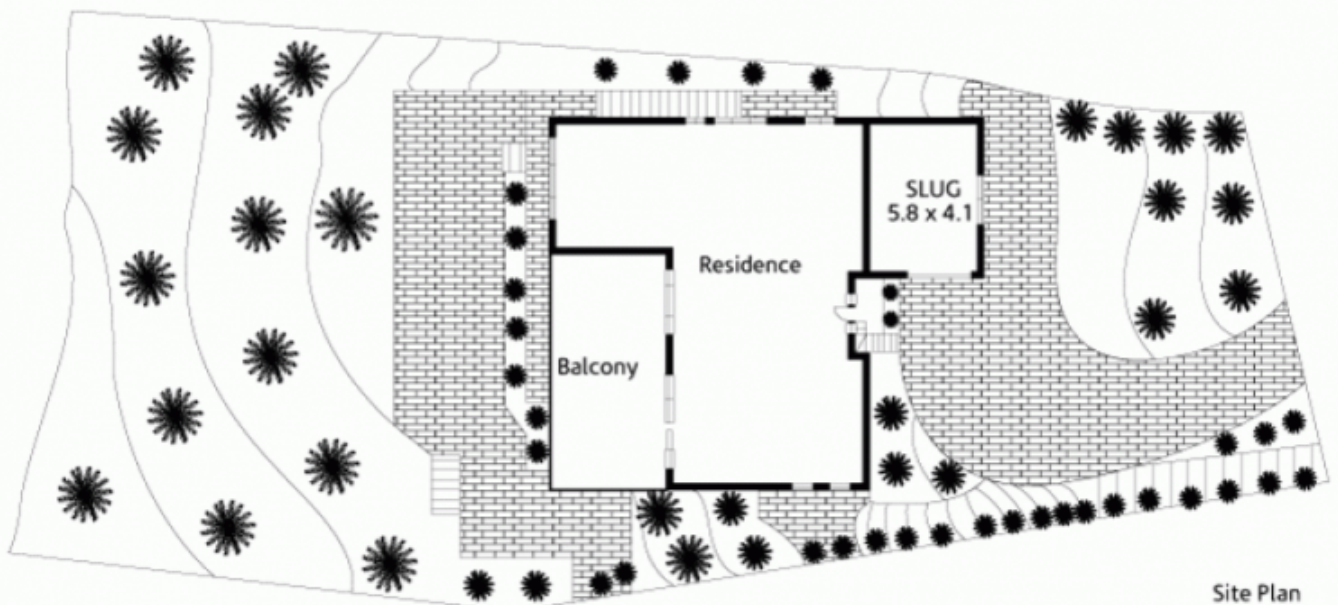
[For full version visit the website](https://www.mcdonaghrealestate.com.au)



Lower Level



Ground Level



Site Plan