



10 Donlea Way MOUNT COLAH NSW

3  1  1 

Beautifully presented two level family home immersed in tranquility, nestles at the end of a cul de sac framed with established natives.

Warm tones and timber joinery welcome you inside to the lower level where an expansive family area captures breathtaking elevated bush views to Hornsby Heights. Exit to the sheltered deck, bringing you virtually face to face with the majestic bush backdrop.

Upstairs, open plan living and dining is enveloped with serene natives outlooks. Dual sliders and bi-fold plantation shutters provide seamless access to the alfresco balcony. A boxed window feature framing the timber cabinetry kitchen will endlessly captivate the entertainer. Stainless

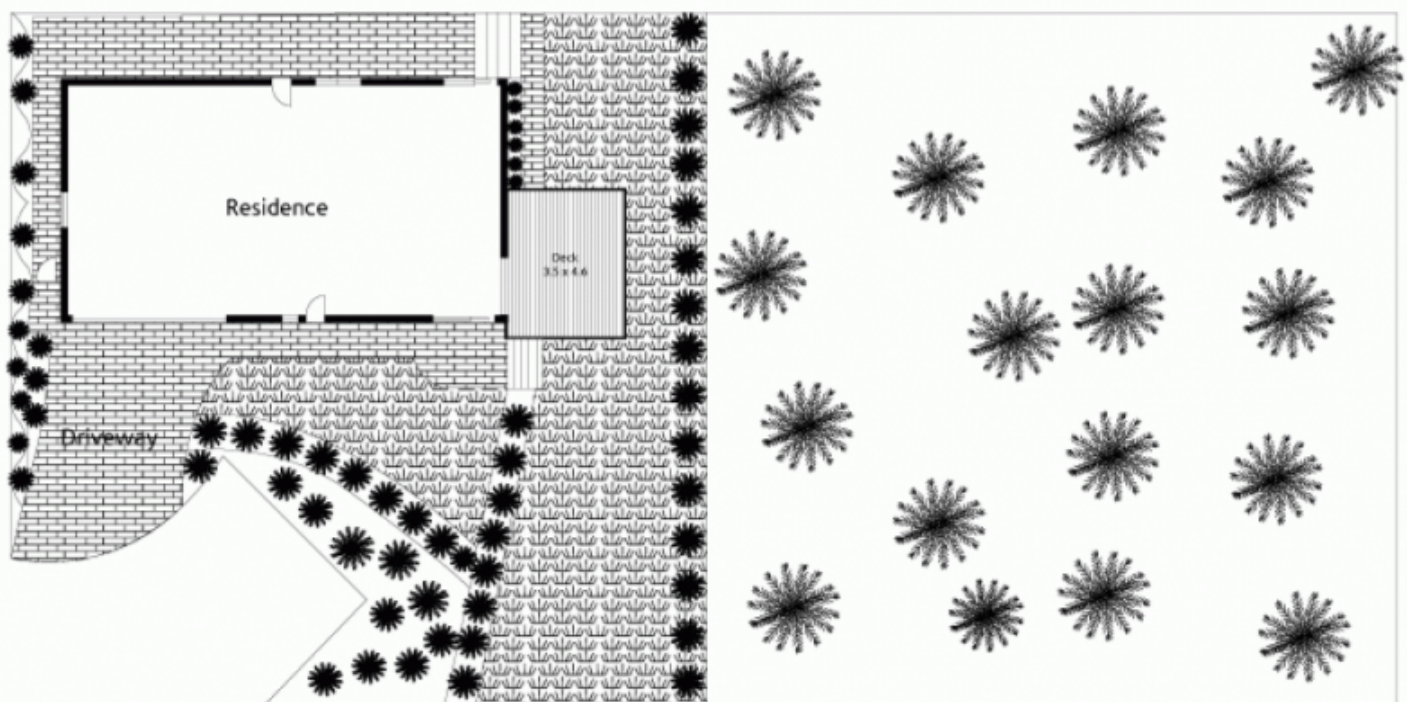
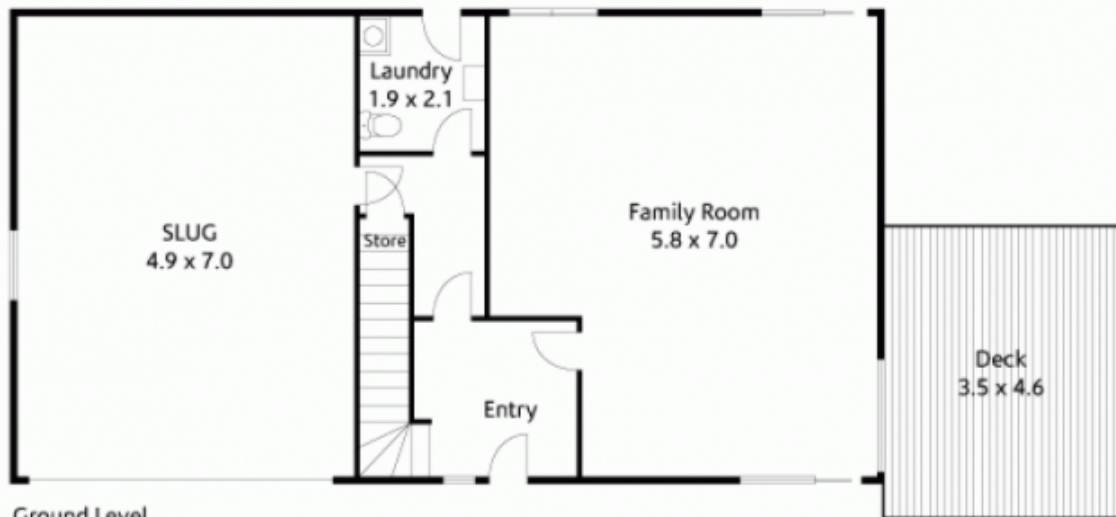
Type : House

Price : \$ 630,000

View : <https://www.mcdonaghrealestate.com.au/sale/nsw/north-shore-upper/mount-colah/residential/house/7473581>

[For full version visit the website](https://www.mcdonaghrealestate.com.au)

<https://www.mcdonaghrealestate.com.au>



Site Plan