



**1/12 Webb Avenue HORNSBY NSW**

**3** **2** **2**

Wide fronted 'Ave Maria' is big on size, low on maintenance and occupies a prime position on the elevated side of a peaceful street setting - a very short stroll to Hornsby station and Westfield.

Neat and tidy interiors are awash with natural light and feel lovely and private with cleverly positioned outlooks.

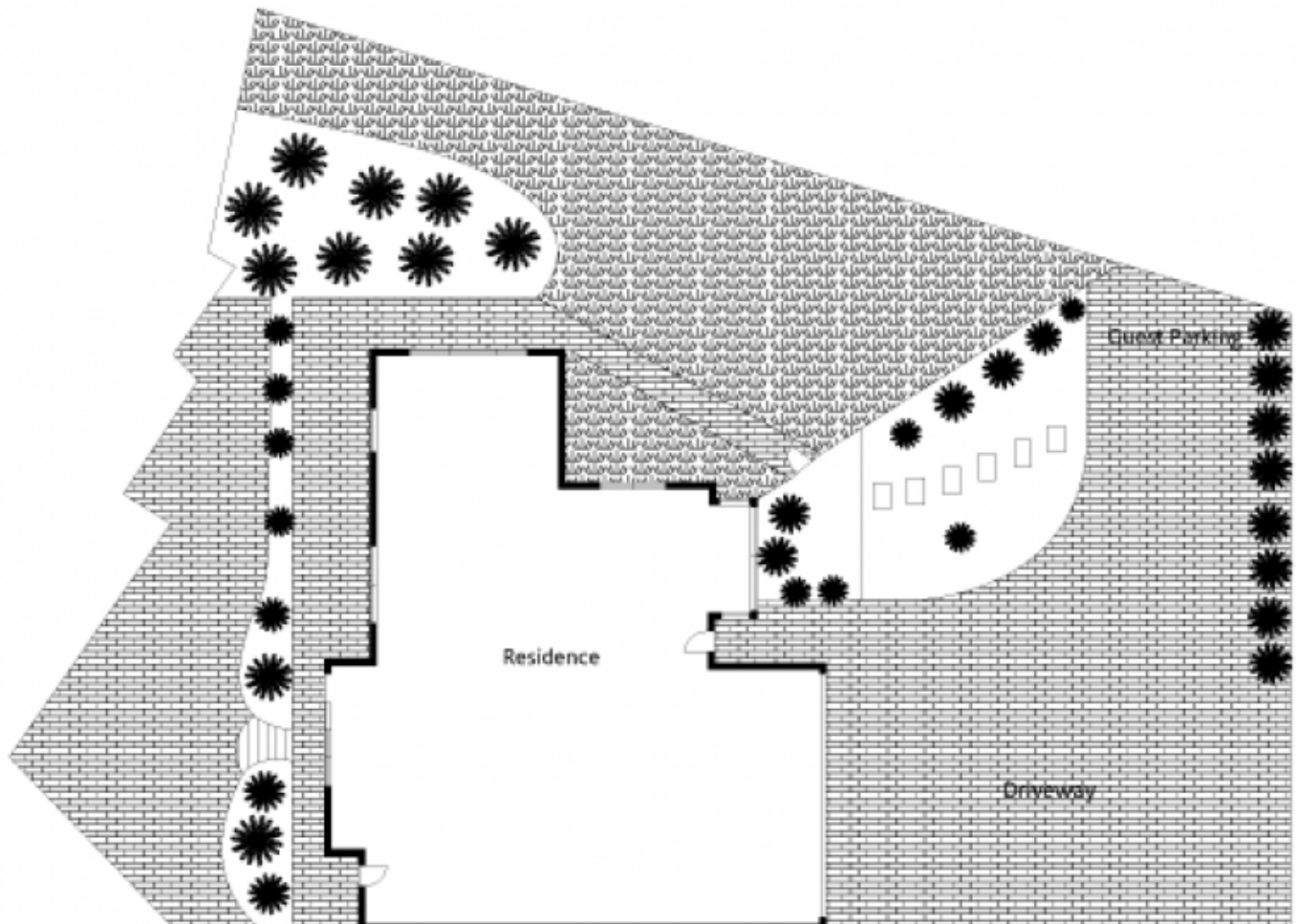
Enter into the bright living area with green views to the front and side hedge gardens, and continue to the formal family room, or into the open plan dining space and gas kitchen with timber cabinetry.

Up sky lit stairs to three generous light filled bedrooms. The spacious master boasts an ensuite, substantial walk in

**Type** : Semi Detached

**View** : <https://www.mcdonaghrealestate.com.au/sale/nsw/north-shore-upper/hornsby/residential/semi-detached/7473550>

[For full version visit the website](https://www.mcdonaghrealestate.com.au)



Site Plan