



23 Warruga Crescent BEROWRA HEIGHTS NSW

3 1 2

This entertainer's paradise seamlessly combines interior comfort with outdoor versatility in a safe, convenient, peaceful street setting complete with white picket fence.

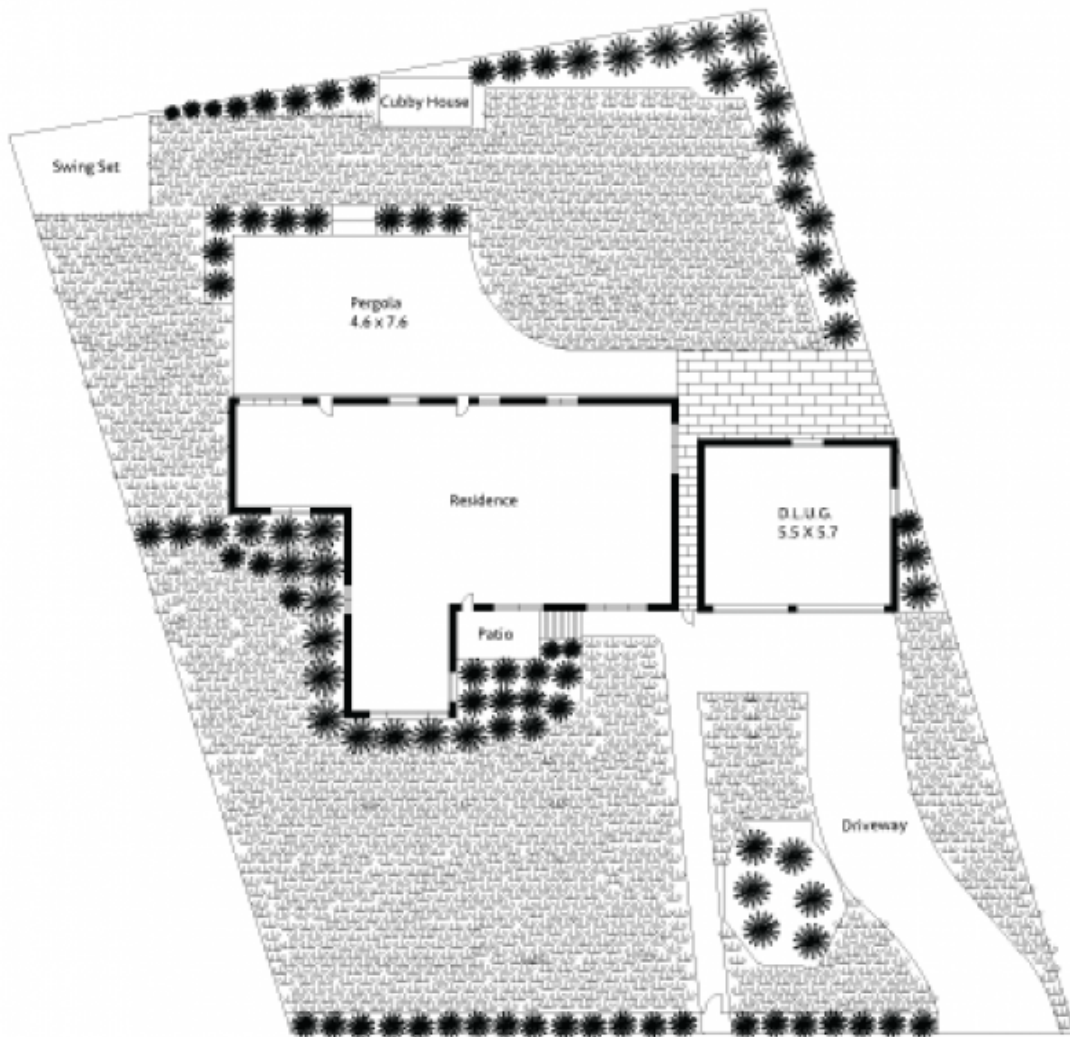
The sprawling 740sqm approx block with a grand entrance occupies the high side of the road, giving the home an enviable elevated position overlooking the large front lawn area and vast green horizon.

Enter the home via a patio style porch, and once inside, veer left to a sun drenched lounge that overlooks the beautiful green lawn - or head down the hallway to the recently upgraded bathroom, complete with spa bath, and the 3 bedrooms, each with mirrored built-ins and ceiling fans.

Type : House

View : <https://www.mcdonaghrealestate.com.au/sale/nsw/hawkesbury/berowra-heights/residential/house/7473498>

[For full version visit the website](https://www.mcdonaghrealestate.com.au)



Site Plan