






2 Leonora Close HORNSBY HEIGHTS NSW

3  2  2 

Cathedral ceilings and clerestory windows add to the light and relaxed ambience of this split level home with 3 bedrooms, 2 bathrooms and a double carport (which is powered). The style of the structure has a modern enduring quality, and the external walls are double brick. Resting on a 934.5sqm approx. site, your soul will be stilled as you soak up the peacefulness of the house and its bush outlook.

The kitchen and large family room (with concealed laundry) open onto a sunny northerly facing courtyard. The home is also directly opposite a lovely reserve and play park. Sit back on the generous deck which overlooks a private saltwater pool and enjoy alfresco dining or watch the birds move through the back garden. The open kitchen has solid

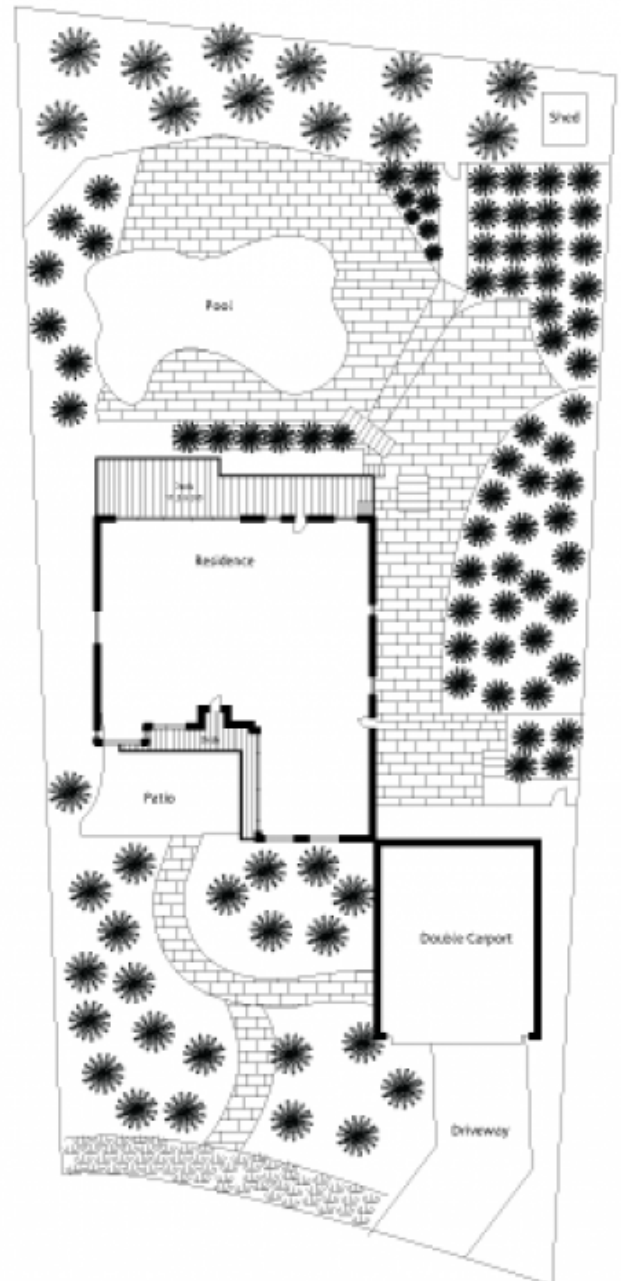
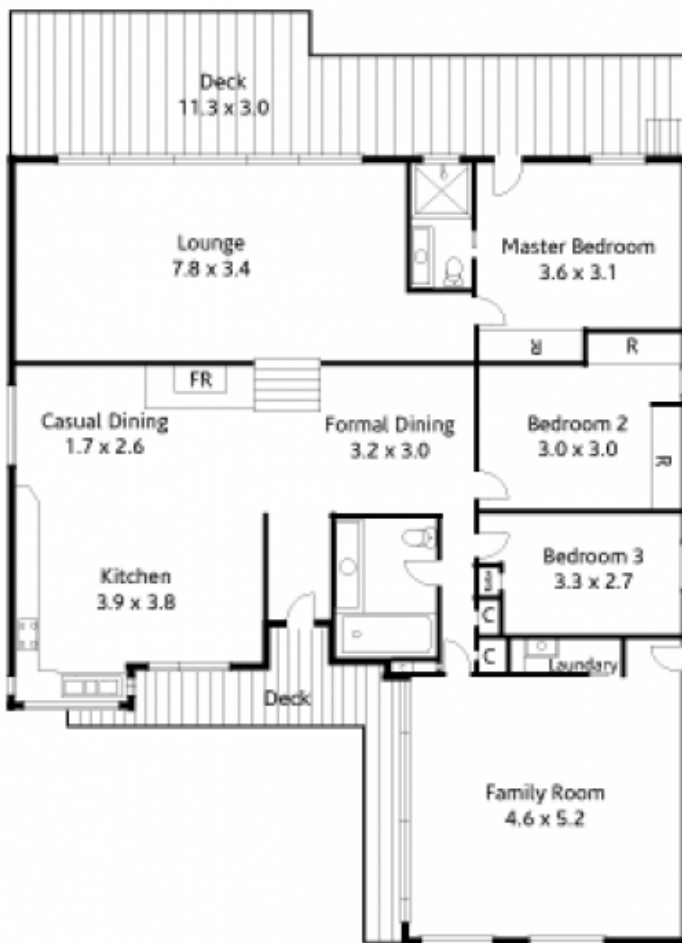
Type : House

View : <https://www.mcdonaghrealestate.com.au/sale/nsw/north-shore-upper/hornsby-heights/residential/house/7473483>

[For full version visit the website](https://www.mcdonaghrealestate.com.au)



Natural Storage Under The House
3.6 x 13.3



Site Plan