






1/21 Jaranda Street BEROWRA NSW

3  **2**  **1** 

Recently updated, and with captivating views towards Ku-ring-gai Chase National Park, this very spacious, modern, 3 bedroom brick duplex has an enviable 166sqm approx of floor space. The home has been contemporised over the last few years with gorgeous colour schemes, R/C air-conditioning, security screen doors, 12mm thick high quality Tasmanian Oak floating floorboards in the kitchen and family room, composite granite stone kitchen benches, ceran style cooktop and S/S appliances. The easy care rear courtyard is terraced into two levels for both alfresco and undercover patio dining.

The master bedroom is king-sized and has a large WIR, study nook/dressing room and ensuite. The two other bedrooms are queen sized and have built-ins. The remote

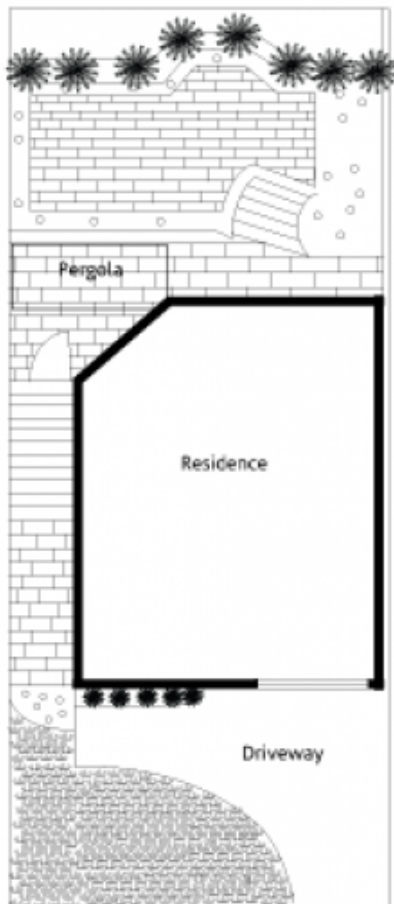
Type : Semi Detached

View : <https://www.mcdonaghrealestate.com.au/sale/nsw/north-shore-upper/berowra/residential/semi-detached/7473474>

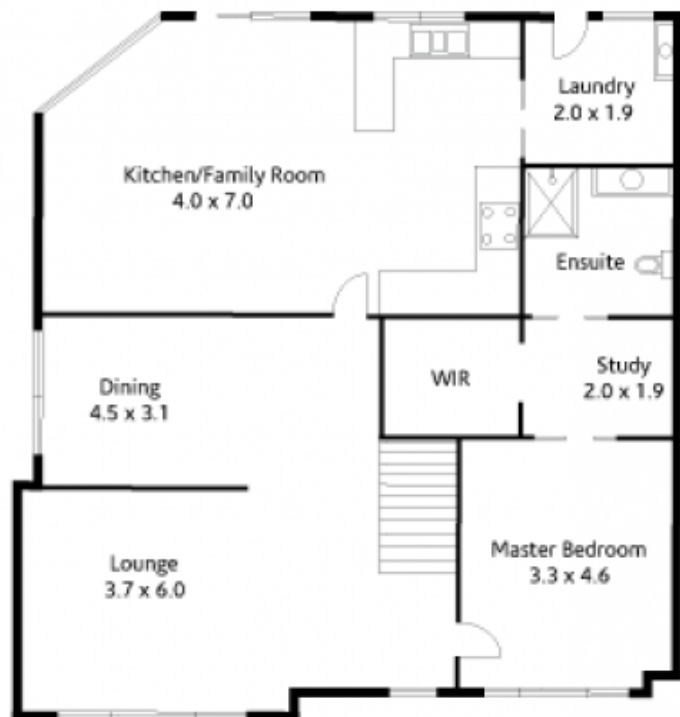
[For full version visit the website](https://www.mcdonaghrealestate.com.au)



Level 1



Site Plan



Level 2