



2 Bridgeview Crescent THORNLEIGH NSW

4 2

Exquisite 'Out of Africa' decorating, clever structural transformations and dramatic solid timber floors, have taken a simple home into dream home status where you will feel totally transported. Renovated over the last 4 years, it comprises 4 bedrooms, 2 bathrooms and 3 car spaces, two spaces being a double with cabling for future remote controlling of the gates. Perfectly positioned on a 746.1sqm approx corner block, the re-alignments of internal spaces create a sensation of vast formal spaces flowing out to equally spacious outdoor living. Deep patterned cornices and an ochre, olive and white colour scheme help to create a grand yet welcoming environment. Colours include Rare Desire, Berkshire White, Raw Encounter and Timbertown and Blue Labrador. The glamorous kitchen has an island breakfast/dining table,

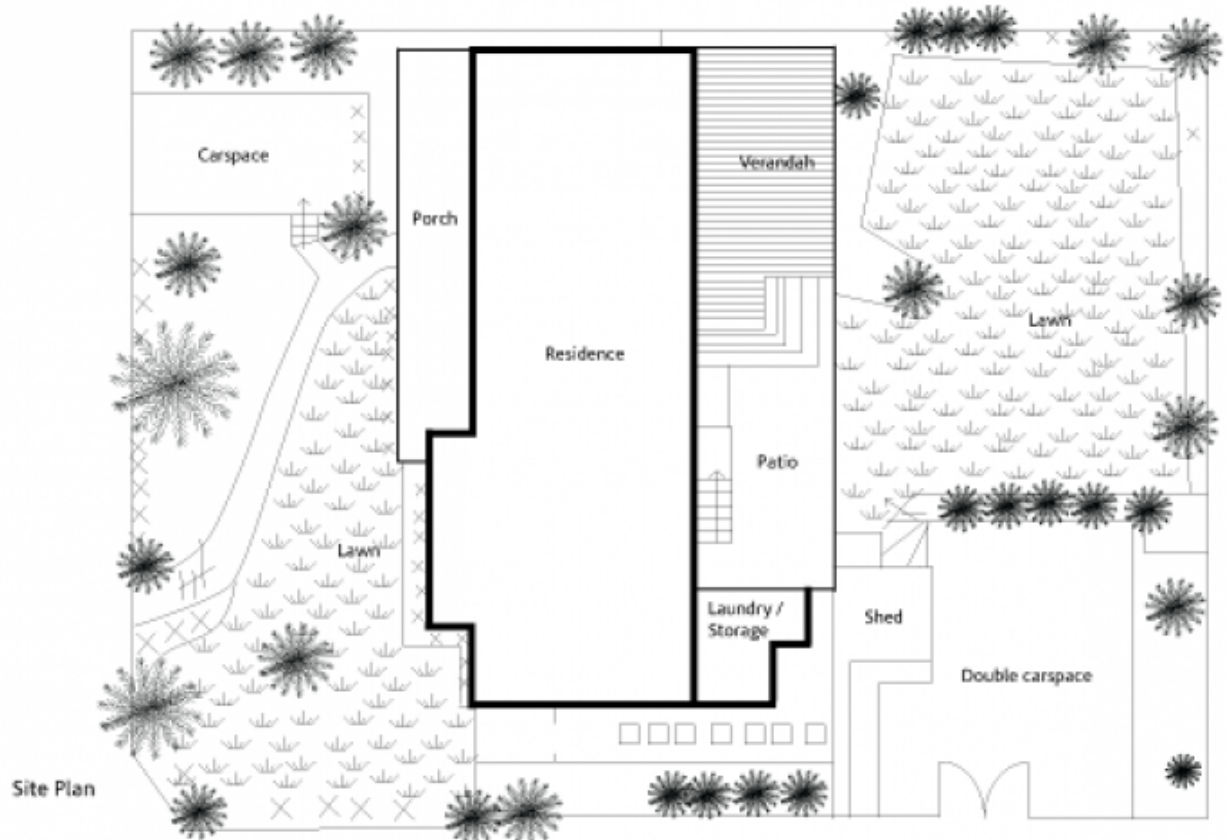
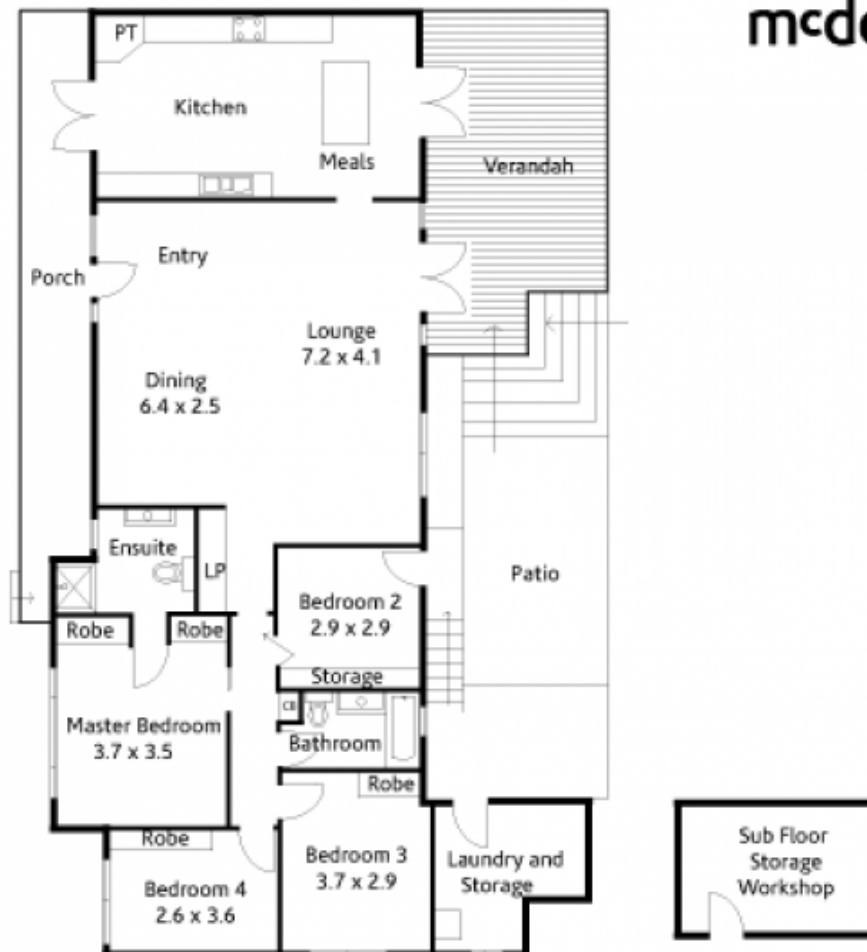
Type : House

View : <https://www.mcdonaghrealestate.com.au/sale/nsw/northern-suburbs/thornleigh/residential/house/7473451>

[For full version visit the website](https://www.mcdonaghrealestate.com.au)



mcdonagh blake



2 Bridgeview Crescent Thornleigh

Council Rates: \$315.60pq approx.
Water Rates: \$150.65pq approx.
Land Size: 746.1 sqm approx.

McDonagh Blake has taken every effort to ensure the information in this brochure is accurate to the best of our knowledge, however, it is a prearranged document only for use as a guide, and no detail should be relied upon. McDonagh Blake accepts no liability for how the information is used.