






## 11 The Crest HORNSBY HEIGHTS NSW

5  2  1 

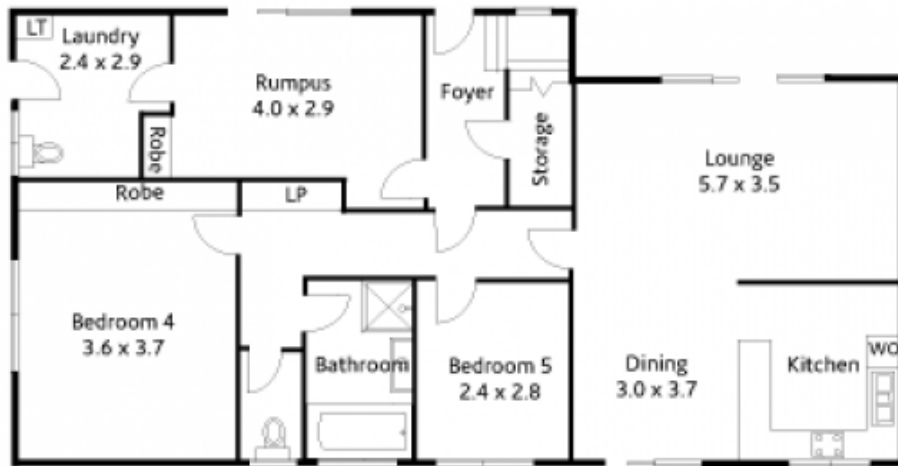
With breath taking views, this home provides incredible privacy in a very friendly and neighbourly environment. The two storey home, in as-new condition on 1000 sqm approx of usable land, backs onto Berowra Valley Regional Park. It has hosted many a food and wine get-togethers by evening and magical playtimes for kids by day. Your eyes will open wide at the benefits of the duplicate upstairs and downstairs floor layouts such as family sized guest accommodation, teenager retreat, adult children and grandchildren coming home, or in law accommodation.

Upstairs comprises a spacious master bedroom plus two double bedrooms all with built-ins; stylish modern kitchen with S/S appliances opening to the dining and lounge, with stunning views; a stunning, contemporary bathroom (with

**Type** : House

**View** : <https://www.mcdonaghrealestate.com.au/sale/nsw/north-shore-upper/hornsby-heights/residential/house/7473445>

[For full version visit the website](https://www.mcdonaghrealestate.com.au)



Ground Floor



Site Plan



First Floor