



#### 14 Flinders Place MOUNT COLAH NSW

3  2 

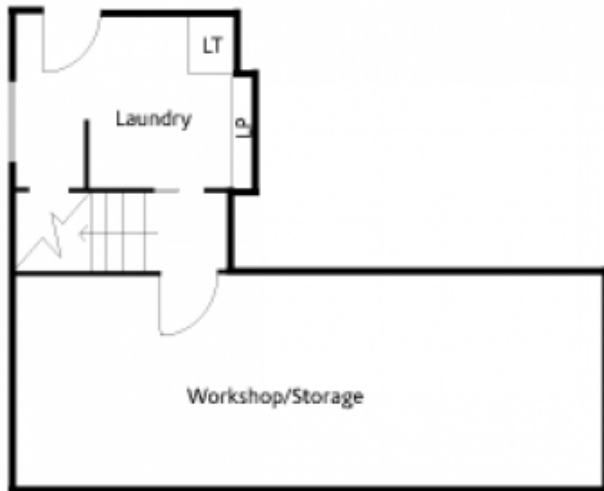
Wide pathways in brick then timber then flagged sandstone, guide you from the cul-de-sac street frontage into a gentle 3 split level family home with gracious internal timber stairs and polished cypress timber floors throughout. Impressively spacious and open plan, the layout allows uninterrupted bush views from every vantage point, from the kitchen, dining, lounge and office and out to a large deck that runs the width of the house.

Conditionally council approved plans for a double carport and rooftop deck will help you make the most of the rear access, via a shared driveway. Sling a hammock on the huge rear deck and soothe yourself at sunset to birdsong, green vistas and fresh air. Recline in the private front garden, directly accessible from the third bedroom/home

**Type** : House

**View** : <https://www.mcdonaghrealestate.com.au/sale/nsw/north-shore-upper/mount-colah/residential/house/7473435>

[For full version visit the website](https://www.mcdonaghrealestate.com.au)



Lower Ground Floor

