



473 Pacific Highway ASQUITH NSW

5 🏠 2 🚗 1 🚗

Behind the quiet post war facade, lies a beautifully renovated and spacious 5 bedroom 2 bathroom home that has been brought right up to the minute with luxury finishes and contemporary designer features. Extended and renovated to high standards over the last 10 years it all looks glisteningly new and is set on 658sqm approx of level land. It has a carport and off-street parking for a further 4 cars. You may like to accommodate a boat for trips to the Hawkesbury River, Berowra Waters or Bobbin Heads.

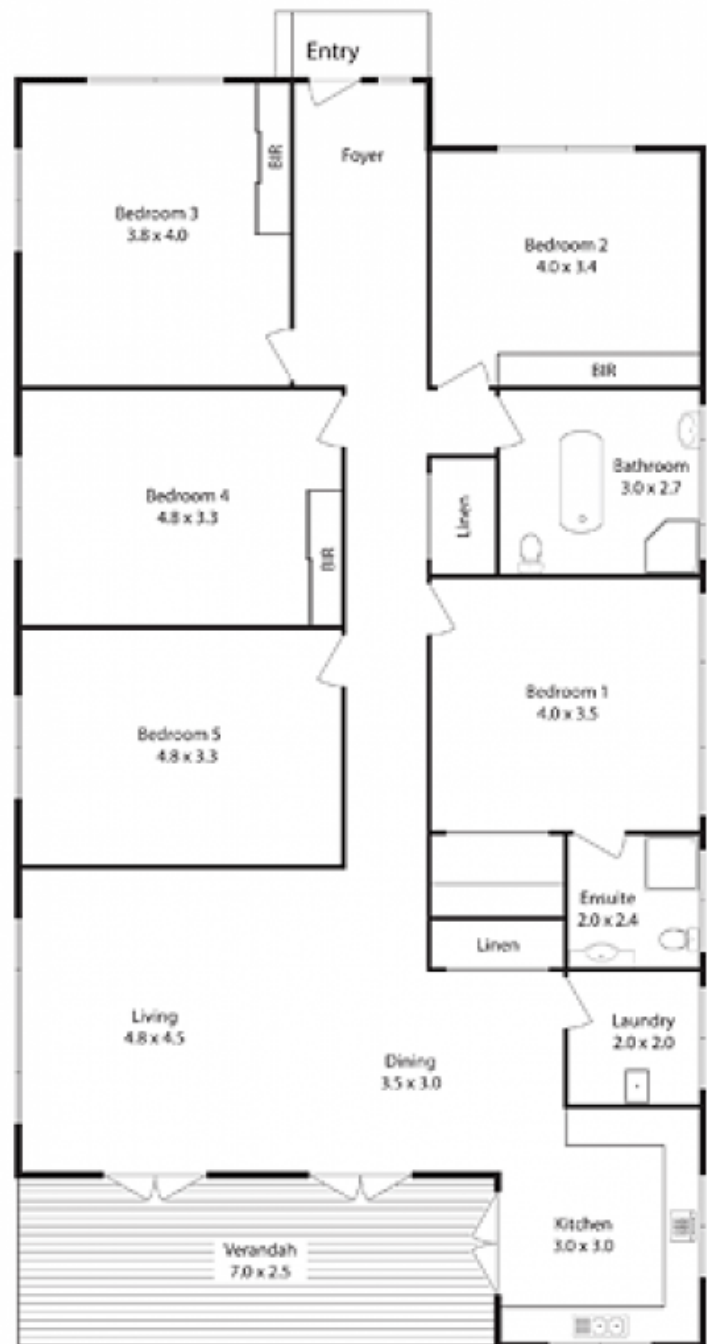
Type : House
Land Size : 658 sqm
View : <https://www.mcdonaghrealestate.com.au/sale/nsw/north-shore-upper/asquith/residential/house/7473375>

A wide hallway introduces the single level layout that satisfies a range of lifestyle requirements, for families, downsizers or singles with a penchant for entertaining. The modern kitchen has stainless steel appliances including a 4 burner gas cooktop. Three sets of double French doors

[For full version visit the website](#)



Site Plan



Water Rates: \$229.15 p.q. approx.
Council Rates: \$268.80 p.q. approx.
Land Size: 658 sqm. approx.