






**4 Galahad Close MOUNT COLAH NSW**

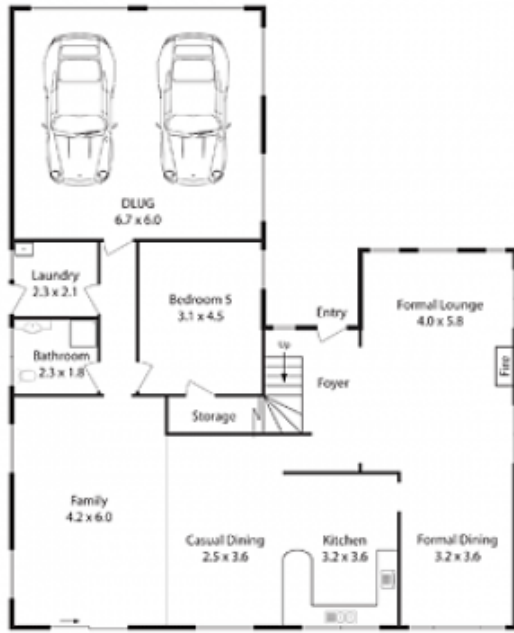
5  3  2 

Exuding relaxation and comfort with plenty of internal space, this home is situated in a very warm and friendly cul-de-sac of 8 houses. Artistic lines and shapes make this north-facing two storey brick home with 5 bedrooms, 3 bathrooms, DLUG and expansive living spaces an enjoyable family home. A 'Sacramento' design by Bernard Constructions, the bedrooms are large and have built-ins, the master bedroom having a good walk-in wardrobe as well. The ensuite is spacious and has views to the north east. All bathrooms were upgraded four years ago and include elegant vanities, porcelain Kohler cisterns and semi-frameless showers.

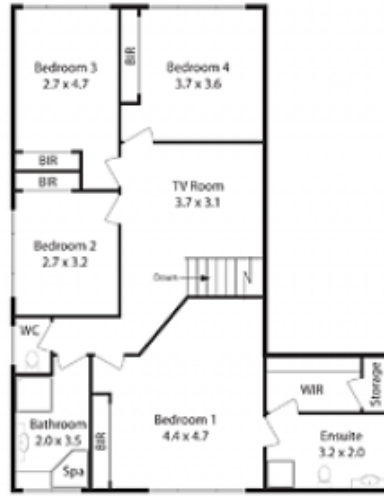
A creative interplay of window shapes, landings and balustrades in the vestibule and impressive high cathedral

**Type** : House  
**Land Size** : 778 sqm  
**View** : <https://www.mcdonaghrealestate.com.au/sale/nsw/north-shore-upper/mount-colah/residential/house/7473373>

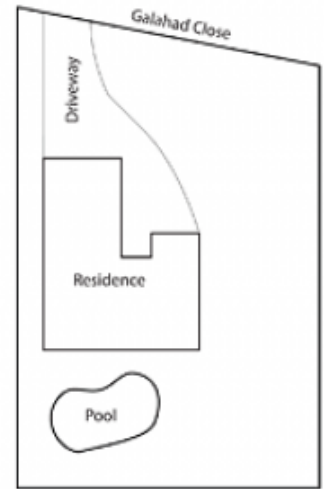
[For full version visit the website](https://www.mcdonaghrealestate.com.au)



Ground Level



Upper Level



Site Plan

Council Rates: \$299.20 p.q. approx.  
Water Rates: \$195.300 p.q. approx.  
Land Size: 778 sqm. approx.