



21/2A Yardley Avenue WAITARA NSW

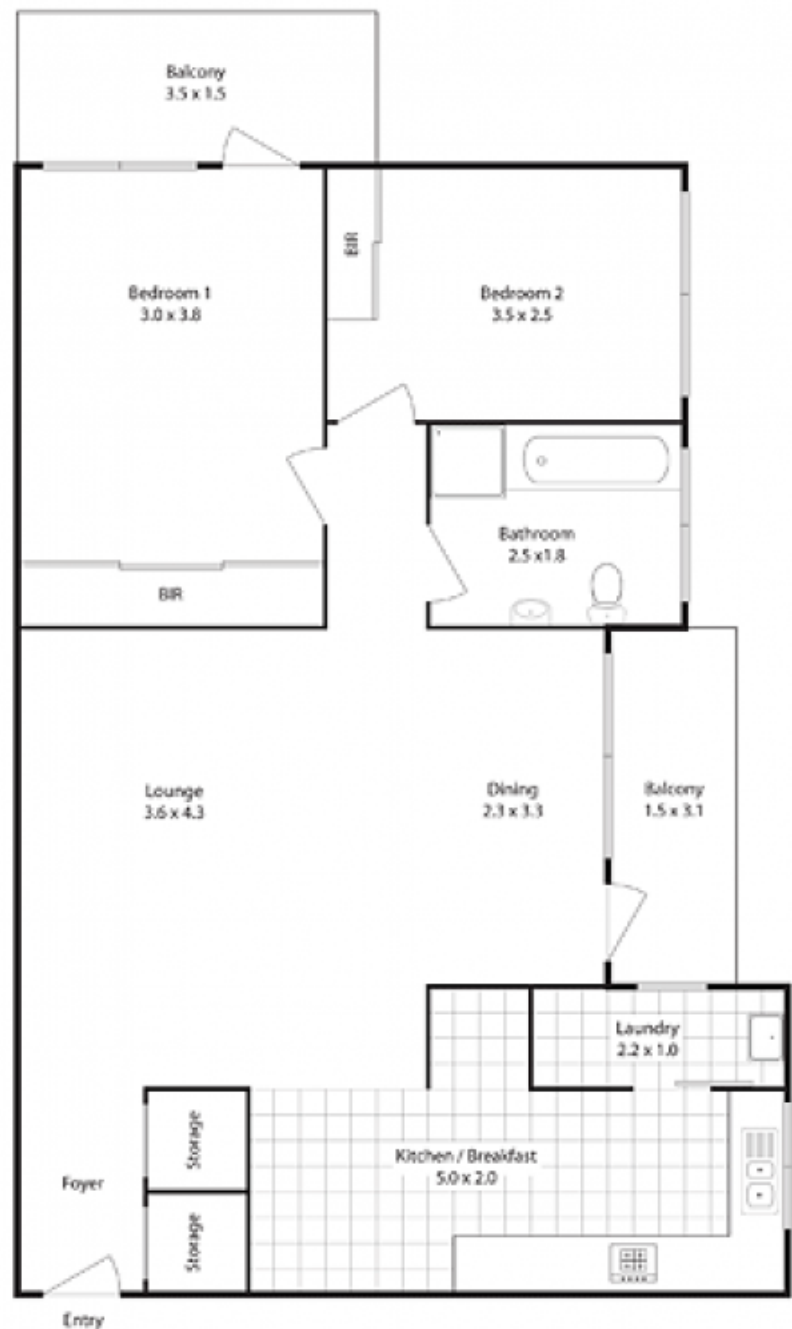
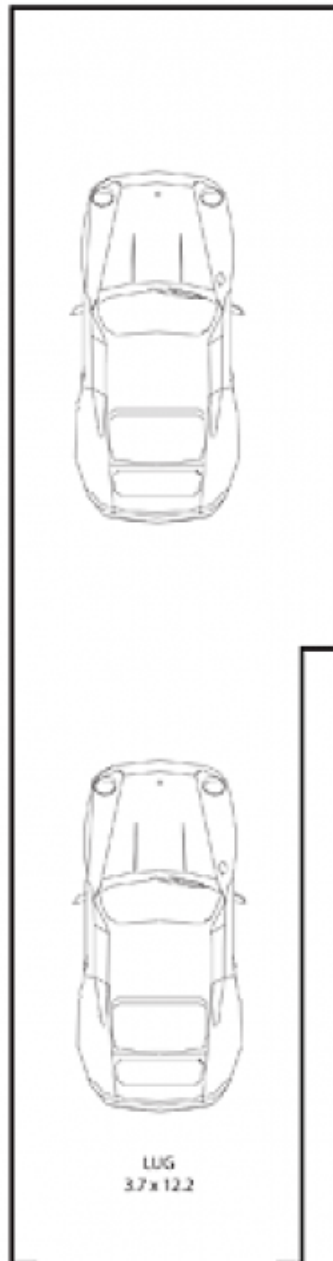
2  **1**  **2** 

Amazingly quiet and at the same time in an incredibly convenient location, this delightful north and east aspect apartment is on the mid level of a double brick low rise block. It has 2 bedrooms, 1 bathroom and a large tandem garage. The lounge, dining, east balcony and kitchen overlook a picturesque garden with a charming stone park bench under a grand old Liquidambar tree. A beautiful spot for lazy Sunday morning breakfasts is the balcony adjoining the master bedroom which basks in the northern sun and overlooks the glistening swimming pool. Renovations over the last 3 years include a sparkling white modern Morlin kitchen (including S/S oven and lit glass display cabinets), breakfast space and laundry, mirrored built-ins, new wall paint, new carpets and timber venetians. The bathroom has an enamel bath, new mirrors and a gleaming vanity with

Type : Apartment

View : <https://www.mcdonaghrealestate.com.au/sale/nsw/north-shore-upper/waitara/residential/apartmen/7473370>

[For full version visit the website](https://www.mcdonaghrealestate.com.au)



Water Rates: \$100.00 p.q. approx.
Council Rates: \$197.00 p.q. approx.
Strata Rates: \$450.00 p.q. approx.