



31 Currawong Road BEROWRA HEIGHTS NSW

2 1 2

Feel grand with your own circular drive, and be very satisfied that you have chosen well when you are enjoying the huge rear yard of this 1095sqm approx north facing block and the 2nd garage that is currently an enormous workshop and there two more good quality sheds in the back yard. This 2 bedroom brick home has a fantastic layout including a big kitchen with a walk-in pantry, cork floors and great benches, and a sunroom that could be a third bedroom. The spacious lounge room has a beautiful green vista through large glass sliding door onto a side deck and garden. The dining and family room looks out to the back yard with its fruit trees and veggie patch and huge lawn area.

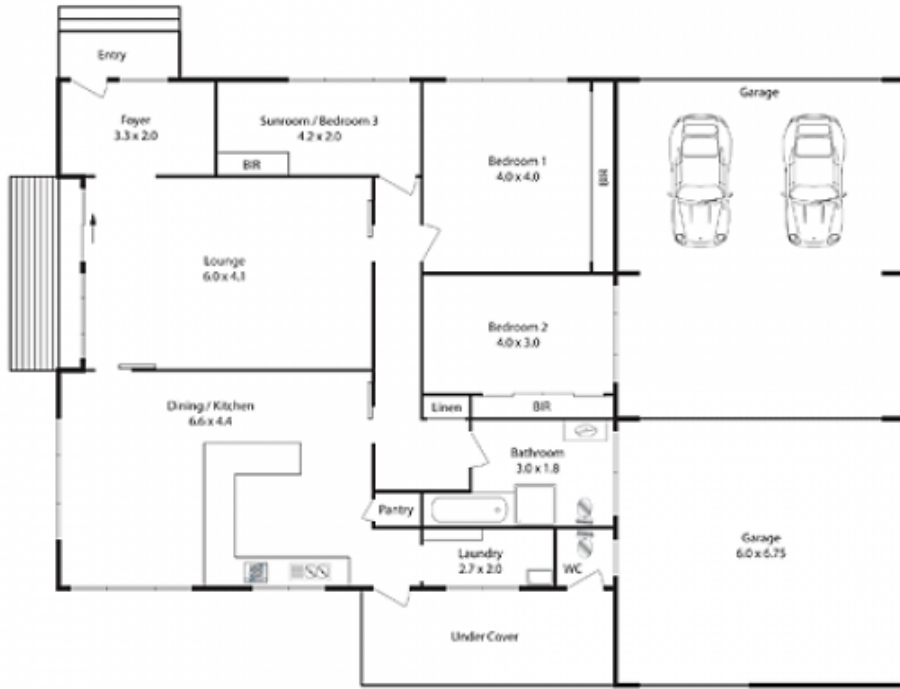
You will also feel very clever when you've applied some

[For full version visit the website](https://www.mcdonaghrealestate.com.au)

Type : House
Price : \$ 495,000
Land Size : 1095 sqm
View : <https://www.mcdonaghrealestate.com.au/sale/nsw/hawkesbury/berowra-heights/residential/house/7473348>



Peter McDonagh
0410 587 856



Water Rates: \$108.65 p.a. approx.
Council Rates: \$240.60 p.a. approx.
Land Size: 1095 sqm approx.