



3 Joalah Crescent BEROWRA HEIGHTS NSW

4  2  1 

Just the right sized property for an easy care lifestyle in a natural setting surrounded by shrubs and trees, with backdrops of foliage seen through big picture windows, privacy is obtained from every room, and generating a feeling of glorious seclusion. This nature-lovers home on 2 levels is only a 5 minute stroll to the stylish Berowra Shopping Mall, second supermarket, restaurants, childcare centre and professional suites.

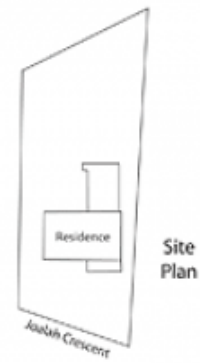
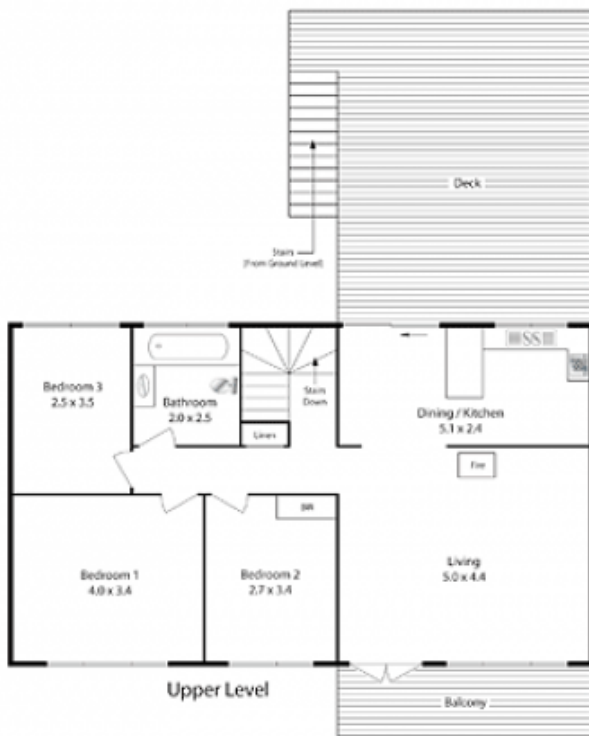
An impressive gated grille entry leads you to 4 bedrooms, 2 bathrooms, internal access, oversized lock-up garage and a super-sized rear deck. The expansive lower bedroom with ensuite could also be used as a home office or rumpus. The building tastefully integrates, brick, timber and tiling, with funky corrugated metal half walls and timber

Type : House
Land Size : 809 sqm
View : <https://www.mcdonaghrealestate.com.au/sale/nsw/hawkesbury/berowra-heights/residential/house/7473337>



Peter McDonagh
 0410 587 856

[For full version visit the website](https://www.mcdonaghrealestate.com.au)



Water Rates: \$165.00 p/q approx.
Land Size: 809.4 sqm approx.