



39/2A Yardley Avenue WAITARA NSW

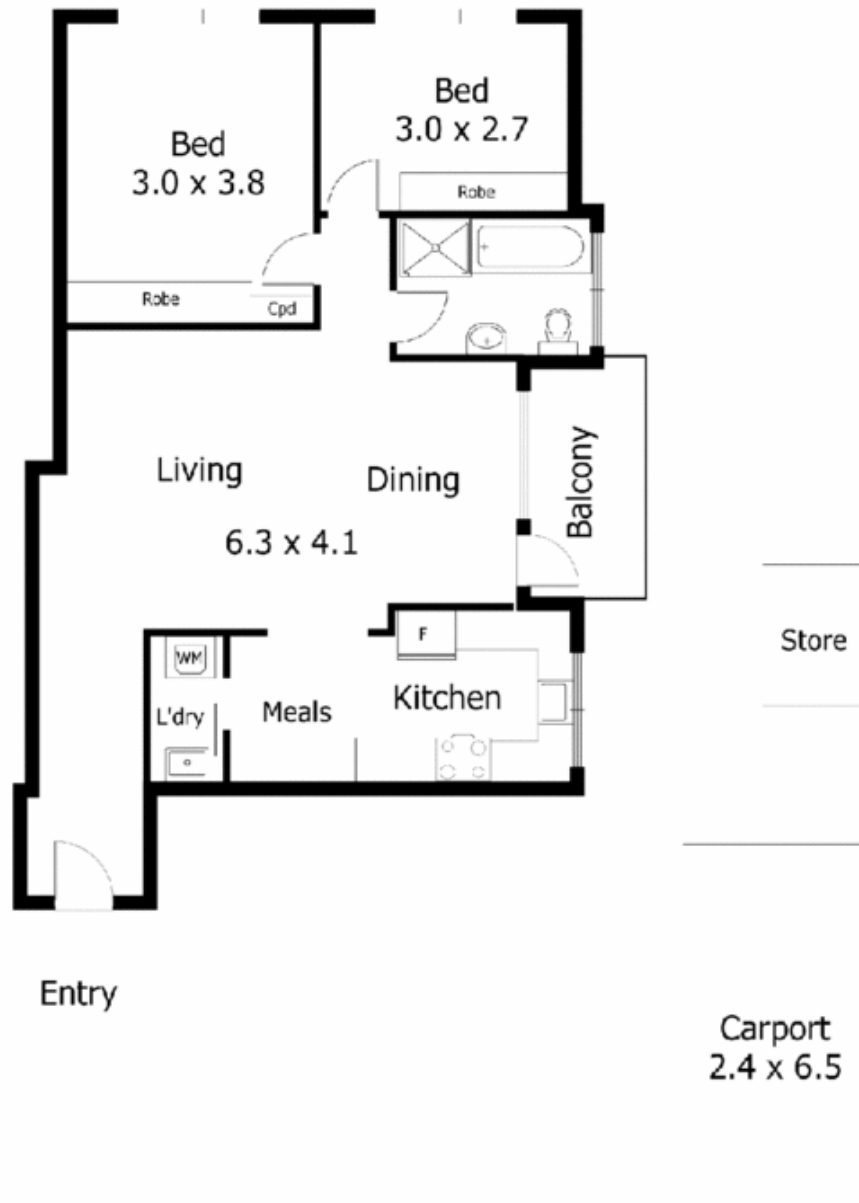
2  1  1 

So conveniently located and amazingly quiet, being just moments to a top quality schools, an easy walk to Waitara station (one stop to excellent shopping at Hornsby and about 40min to the City), Waitara Park (with oval, bowling club and tennis courts) and quick access to the freeway to the Central Coast all making this property highly desirable. Renovations of 2.5 years ago include stepped cornices, freshly painted walls, contemporary black and blonde kitchen (with S/S oven, granite benches and splash backs) and excellent carpets create a modern and relaxed feeling.

Features of this lovely apartment include solid brick walls, combined lounge and dining with a French door opening onto a good sized balcony, 2 Bedrooms, one full bathroom,

Type : Unit
Price : \$ 379,000
View : <https://www.mcdonaghrealestate.com.au/sale/nsw/north-shore-upper/waitara/residential/unit/7473334>

[For full version visit the website](https://www.mcdonaghrealestate.com.au)



Strata \$310pq (approx)
Water \$122pq (approx)
Council \$189pq (approx)

39/2A Yardley Avenue, Waitara

McDonagh Blake has taken every effort to ensure the information in this brochure is accurate to the best of our knowledge, however it is a promotional document only for use as a guide, and no detail should not be relied upon. McDonagh Blake accepts no liability for how the information is used.