



2 Waratah Road BEROWRA NSW

4 2 2

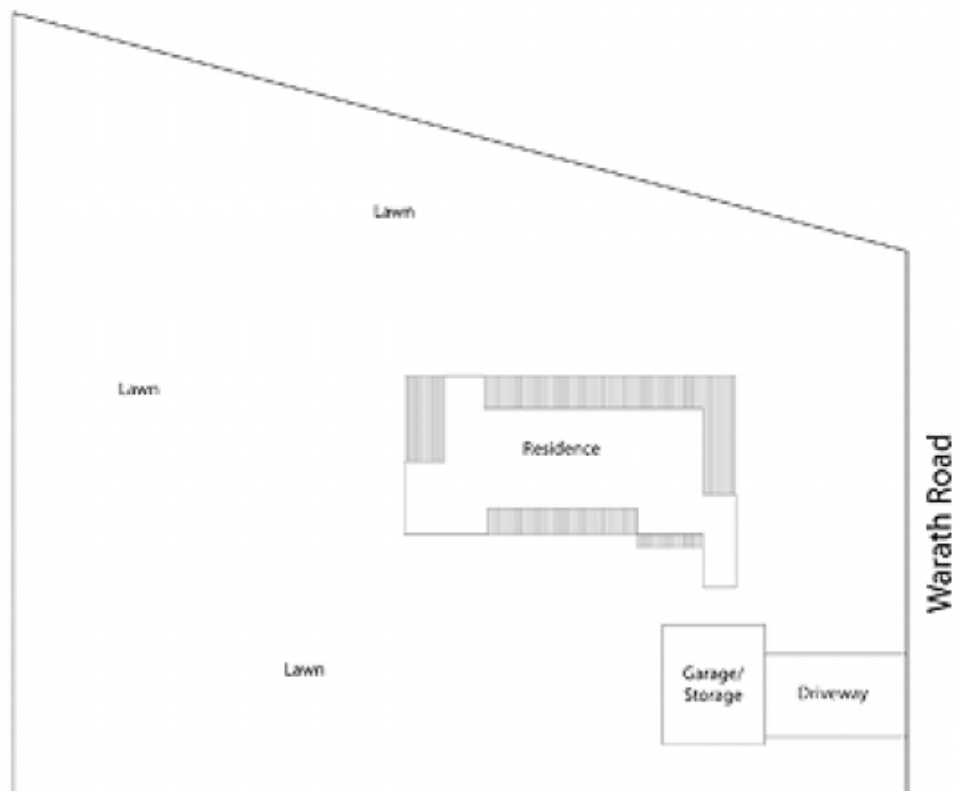
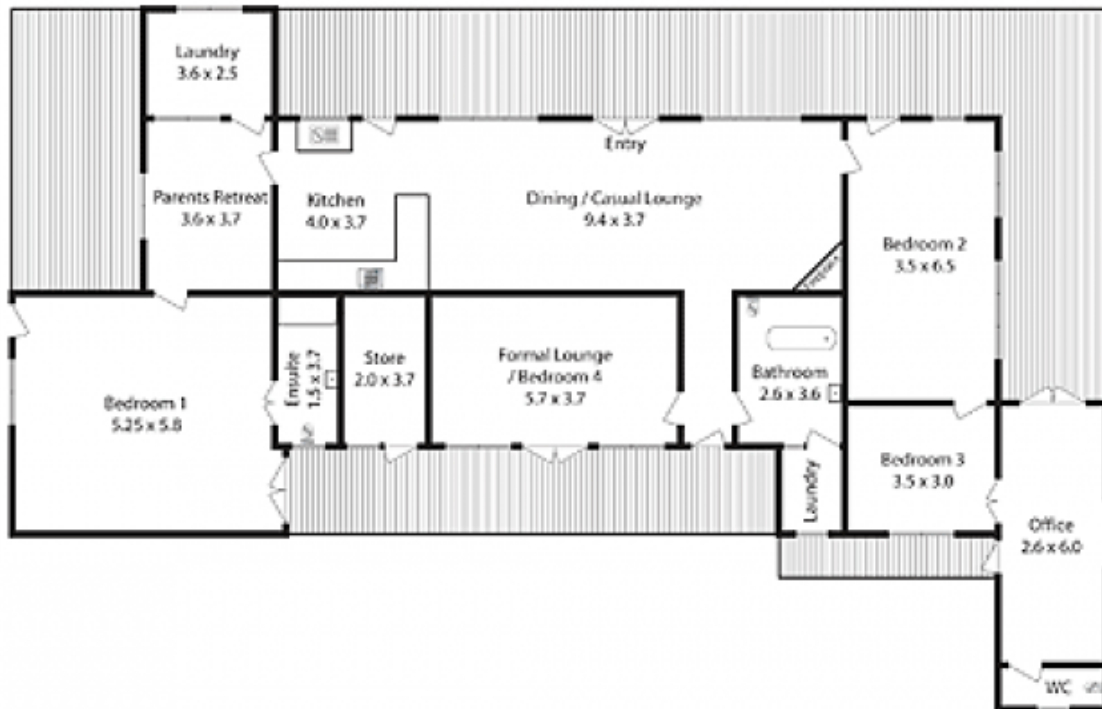
Substantial allotments from this completely level 2713m2 approx block. Council plans for the subdivision are available, with concept plans for quality one and two storey homes.

Capitalise on a strong resale potential, with walk to the train, bus, shops and schools. The north facing backyard aspect and generous proportions of each lot add to the desirability, and the flat nature of the site make it a dream development opportunity for ease of construction.

The current home can be lived in or rented out until you are

[For full version visit the website](#)

Type : House
Land Size : 2713 sqm
View : <https://www.mcdonaghrealestate.com.au/sale/nsw/north-shore-upper/berowra/residential/house/7473332>



Land Size: 7/13 acm approx