



9/18-22 Paling Street THORNLEIGH NSW

3  **2**  **2** 

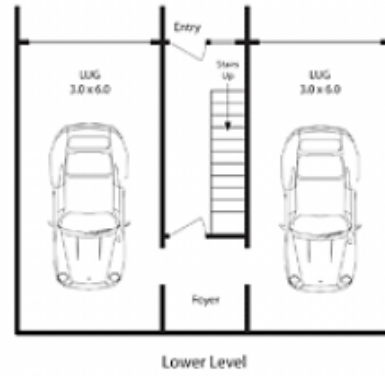
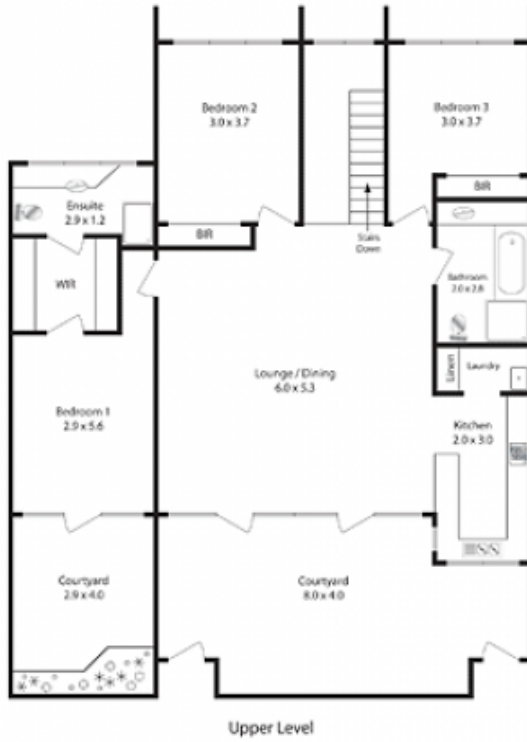
Recline in calm repose on the lounge under soaring cathedral ceilings in the stillness and quiet listening only to the serenade of birds. Entertain your friends in the free-feeling combined lounge and dining room and kitchen as expanse of glass stretching across it opens onto a good courtyard. Or grab your walking shoes or bicycle and head for great trails starting a couple of streets away at the top of Lane Cove National Park to see wildlife and a wide variety of bird species close up, including lyrebirds, tawny owls and rosellas.

Themed in beach house colours, with blond floating floorboards in high traffic areas and fashionable painted concrete floors in 2 bedrooms (with built-ins), this 3 bedroom townhouse, with two single LUGs, is positioned in

Type : Townhouse

View : <https://www.mcdonaghrealestate.com.au/sale/nsw/northern-suburbs/thornleigh/residential/townhouse/7473329>

[For full version visit the website](https://www.mcdonaghrealestate.com.au)



Council Rates: \$204.40 p.q. approx.
Water Rates: \$191.50 p.q. approx.
Strata Rates: \$589.55 p.q. approx.