






6 Waddell Crescent HORNSBY HEIGHTS NSW

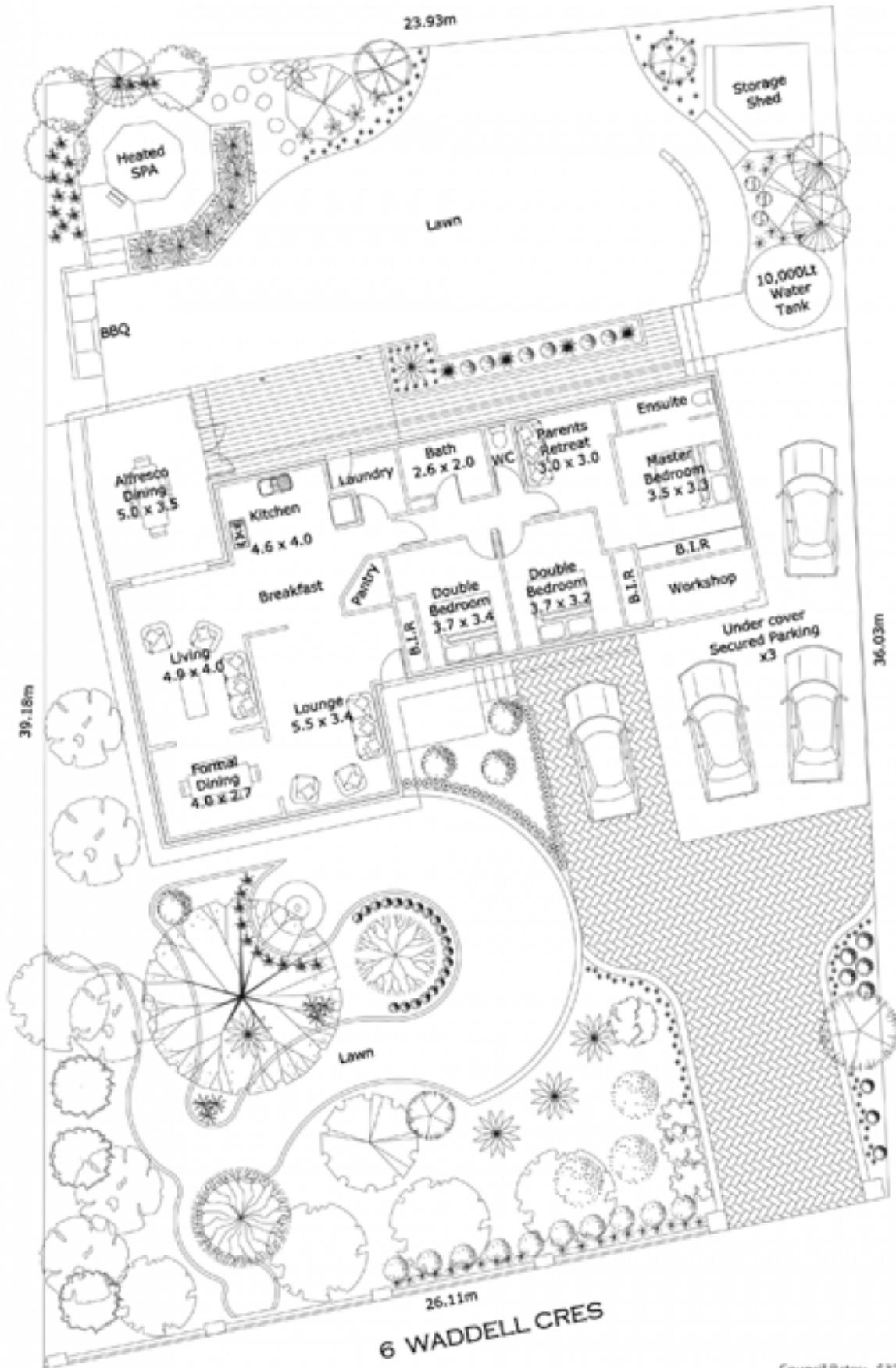
3  **2**  **3** 

Created by a landscape designer and a horticulturalist, the microscopic attention to detail in the immaculate gardens has been carried through into the house where surfaces and products of exceptional value have been installed. Slate flooring introduce this transformed 3 bedroom 2 bathroom home on 929sqm approx of mainly level land. An extra wide driveway leads to a secured and enclosed auto door carport for 3 vehicles and a workshop. Elegant embossed vertical blinds provide total blackout. Hunter Douglas ceiling fans are stable and silent. Tasmanian Oak floating floors have a deeper than average profile, skirting and architraves are maple. Swiss emerald pearl granite, is the most dense water resistant granite, has been applied to the kitchen benches and breakfast bar, while overhead is a backlit hexagonal cedar skylight with removable Floreal

Type : House

View : <https://www.mcdonaghrealestate.com.au/sale/nsw/north-shore-upper/hornsby-heights/residential/house/7473321>

[For full version visit the website](https://www.mcdonaghrealestate.com.au)



Council Rates: \$325 p.q. approx.
Water Rates: \$200 p.q. approx.
Land Size: 929 sqm approx.

6 Waddell Crescent, Hornsby Heights

This floor plan, photography & copywriting serve as a guide for promotional purposes only and should not be relied upon for any specific detail. McDonagh Blake has taken every effort to ensure the information contained in this brochure is true and accurate to the best of our knowledge, however will not be held responsible or liable if the information is false or misleading in anyway. Individuals should rely on their own due diligence and not upon the information contained in the brochure.