



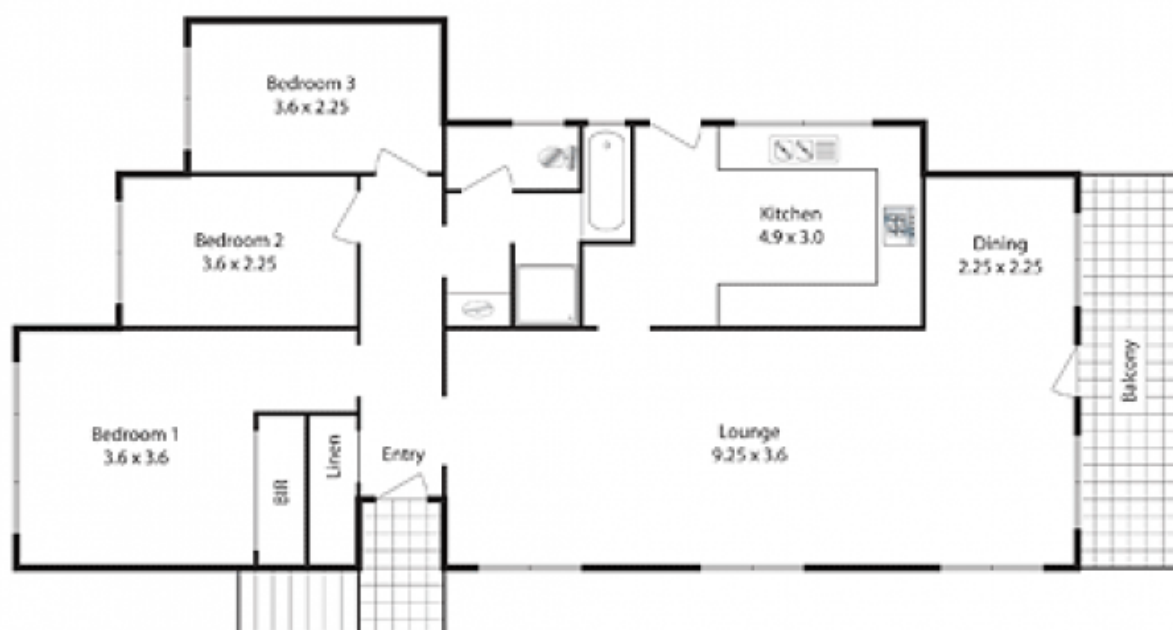
1 Berkeley Close BEROWRA HEIGHTS NSW

3  1  1 

Security for small children or large dogs or for those who need to feel private, is made possible by high fencing around the entire perimeter of this 3 bedroom SLUG brick home. Positioned on 733sqm approx of gently undulating north facing land, it achieves a pleasant streetscape view, is in a prime corner position and has been thoughtfully updated. The landscaping has allowed for level areas that add visual interest and functionality including a decorative planting of agapanthus, a mature vegie patch taking advantage of the rich earth, and a wide driveway that integrates well with the level green spaces. Newly installed, the kitchen has S/S appliances, good benches, storage, floor space and a door directly to a private sitting area that forms part of the wrap around garden. The external laundry has good level access to the clothesline, and the SLUG

Type : House
Land Size : 733 sqm
View : <https://www.mcdonaghrealestate.com.au/sale/nsw/hawkesbury/berowra-heights/residential/house/7473316>

[For full version visit the website](https://www.mcdonaghrealestate.com.au)



Site Plan

Council Rates: \$280.00 p.q. approx.