



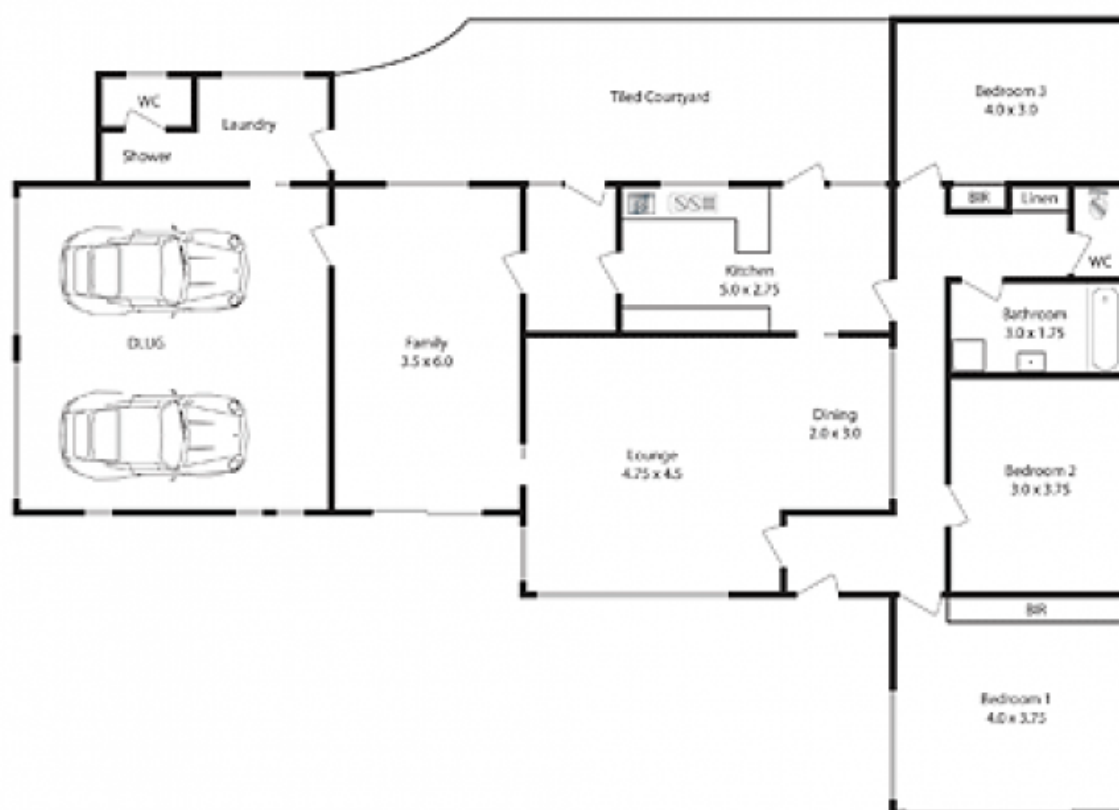
2B Springfield Road HORNSBY HEIGHTS NSW

3  2  2 

Smart looking facade and smart location, this cute blond brick home with two street frontages, north to a cul-de-sac, and west to a quiet street, on a valuable level 771.4sqm approx of land, is a smart choice. It is a short walk to Rofe Park, Hopeville playpark, Hornsby North Public School, the bus stop, bushwalks, pre-schools and Ethel St medical centre. Five mature palms, a brilliant red camellia and a snowy white azalea are just some of the plants that grace the well maintained back garden, which is safe, fenced, sunny and peaceful and with ample grassed area for kids to romp around in. It is overlooked by an undercover tiled BBQ patio and an eat-in kitchen. There's plenty of room to raise a little family or to indulge in multiple hobbies, in it's 3 bedrooms, 2 bathrooms, 2 living rooms and DLUG. Take advantage of the corner access to bring a boat, caravan or

Type : House
Land Size : 771 sqm
View : <https://www.mcdonaghrealestate.com.au/sale/nsw/north-shore-upper/hornsby-heights/residential/house/7473300>

[For full version visit the website](https://www.mcdonaghrealestate.com.au)



Council Rates: \$309.51 p.q. approx.
Water Rates: \$170.65 p.q. approx.
Land Size: 771.4 sqm approx.